

# Barrier washer extractor

## WB4130H, WB4180H

### Features and benefits

- Loading door either on the right or left hand side of the barrier washer
- Large loading and unloading door for fast and easy operations
- **Compass Control® with:**
  - Large display and one dial for easy program selection
  - Language selection
  - Two Quick Start buttons for frequently used wash programs
- Perforated inner drum lifters for improved washing efficiency
- Prepared in standard for automatic detergent supply
- Suspended machines to be installed without any foundations
- High extraction force for efficient dewatering

### Main options

- **Clarus Control® with:**
  - Fully programmable microprocessor
  - All relevant wash parameters can be programmed
  - Programming from key pad or downloading via memory card
- Third water inlet valve (Clarus Control)
- Integrated weighing system (Clarus Control)
- Titration valve for bath sampling (Clarus Control)
- Certus Management Information System (CMIS) to ensure traceability of the linen -as per RABC\*\*\* standards (Clarus Control)



Machine with optional plinth

Main specifications			WB4130H		WB4180H	
Max. capacity		kg/lb	13/30		18/40	
Drum	volume	litre/ft <sup>3</sup>	130/14.6		180/6.4	
	diameter	ø mm/inch	650 / 25 9/16		725 / 28 9/16	
Extraction		rpm	910		860	
G-factor			300		300	
Heating alternatives,	electricity	kW	12.5		17.5	
	steam		x		x	
	non-heated		x		x	
<b>Consumption data "Light soiled" * (3S02)</b>			El	Steam	El	Steam
Total time		min	39	38	36	35
Water consumption (cold+hot)		litre	47+125	47+125	63+173	63+173
		gallon	12.4+33	12.4+33	16.6+45.7	16.6+45.7
Energy consumption (motor/heating)*		kWh	0.25/0.65	0.25/-	0.4/0.85	0.4/-
Steam consumption**		kg	-	0.95	-	0.95

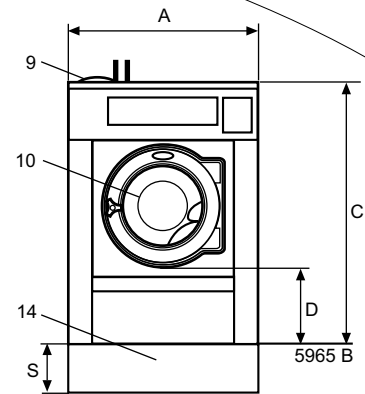
\* Water temperature 59°F cold water and 149°F hot water.

\*\* Depending on steam pressure.

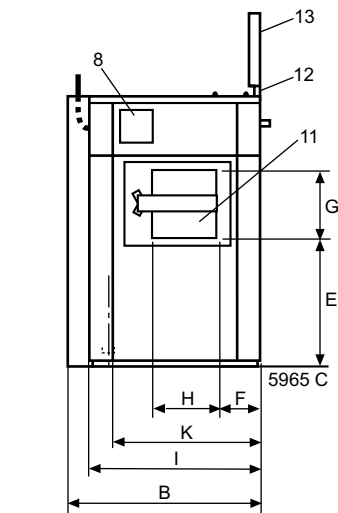
\*\*\* RABC, Risk Analysis and Biocontamination Control

Electrical connections*		WB4130H	WB4180H
Heating Voltage			
El.	208-240V 3AC 60 Hz kW(A)	12.5(35)	17.5(50)
Steam	208-240V 1AC 60 Hz kW(A)	1.7(10)	2.3(16)
<b>Water and steam connection</b>			
Water valves	inch	3/4	3/4
Water pressure	psi	30-90	30-90
Capacity at 45 psi	l/min / gallon/min	27/7	60/15
Drain valve	ø mm/inch	75/3	75/3
Draining capacity	l/min / gallon/min	150/40	150/40
Steam valve	inch	1/2	1/2
Steam pressure	psi	45-90	45-90
Liquid detergent supplies		5	5
<b>Floor requirements</b>			
Frequency of the dynamic force	Hz	15.2	14.3
Max floor load at extraction	kN	3.4 ± 0.5	2.9 ± 1.0
<b>Sound levels</b>			
Airborne sound level	dB(A)	73	75
<b>Heat emission</b>			
% of installed power, max		5	5
<b>Shipping data</b>			
Weight	net, kg/lbs	296/658	356/785
	crated, kg/lbs	313/690	376/829
Shipping volume	m <sup>3</sup> /ft <sup>3</sup>	1.27/44.9	1.64/57.9
<b>Accessories</b>			
Steel base frame		x	x
Water re-use tank (Clarus Control)		x	x
Hose connection kits for water or steam		x	x
<b>Dimensions in mm/inch</b>			
<b>A</b> Width		910 / 35 13/16	970 / 38 3/16
<b>B</b> Depth		875 / 34 7/16	975 / 38 3/8
<b>C</b> Height		1325 / 52 3/16	1410 / 55 1/2
<b>D</b>		435 / 17 1/8	470 / 18 1/2
<b>E</b>		575 / 22 5/8	610 / 24
<b>F</b>		200 / 7 7/8	200 / 7 7/8
<b>G</b>		390 / 15 3/8	390 / 15 3/8
<b>H</b>		345 / 13 9/16	385 / 15 3/16
<b>I</b>		785 / 30 7/8	870 / 34 1/4
<b>J</b>		1035 / 40 3/4	1120 / 44 1/8
<b>K</b>		700 / 27 9/16	820 / 32 5/16
<b>L</b>		1225 / 48 1/4	1330 / 52 3/8
<b>M</b>		380 / 14 15/16	395 / 15 9/16
<b>N</b>		300 / 11 13/16	315 / 12 3/8
<b>O</b>		1185 / 46 5/8	1290 / 50 13/16
<b>P</b>		340 / 13 3/8	340 / 13 3/8
<b>Q</b>		825 / 32 1/2	1120 / 44 1/8
<b>R</b>		455 / 18	485 / 19 1/8
<b>S</b>		285 / 11 1/4	200 / 7 7/8
<b>T</b>		304 / 11 15/16	334 / 13 1/8
<b>1</b> Electrical connections	<b>10</b> Door opening, unloading side		
<b>2</b> Cold water	WB4130H: ø 395 mm / 15 9/16 inch,		
<b>3</b> Hot water	WB4180H: ø 435 mm / 17 1/8 inch		
<b>4</b> Hard water	<b>11</b> Door opening, loading side		
<b>5</b> Steam connection	WB4130H: 280 x 280 mm / 11 x 11 inch,		
<b>6</b> Drain	WB4180H: 320 x 280 mm / 12 5/8 x 11 inch		
<b>7</b> Liquid supply connections	<b>12</b> Barrier frame		
<b>8</b> Compass or Clarus Control	<b>13</b> Barrier partition		
<b>9</b> Detergent compartment (optional)	<b>14</b> Plinth (optional)		

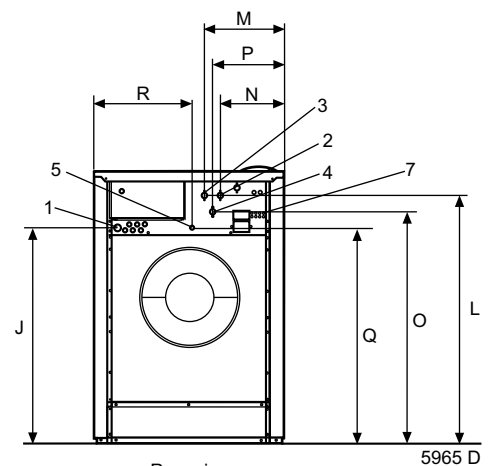
\* Other voltages available, see installation manual.



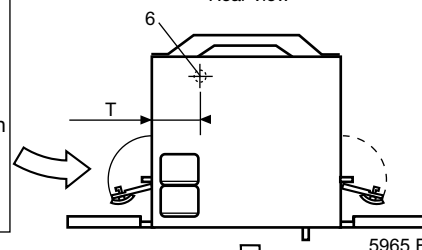
Front view



Left view



Rear view



Top view